



BEARING & TOOL CENTRE



Head Office

1st Floor, Vyapar Bhavan, Kadia Kui,
Relief Road, Ahmedabad - 380001.
Ph:- 079 - 22160386, 65254835, 22134835
Mobile : 7819819941, 9375706649

Ahmedabad Branch

GF-B-14, Jayraj Complex, Nr. Soni ni Chawl,
Odhav, Ahmedabad - 382415.
Ph:- 079 - 22890202, 65458950, 65404657, 65400202
Mobile : 7878825197, 7819819938, 9375706648

Website : www.bearingtoolcentre.com, www.bearingtoolscentre.com | Email : info@bearingtoolcentre.com

Our Sister Concern : RELIEF SERVICE CENTRE

Repairs, Removal of Jaw Error, Bore Gauge Extension, Instrument Modifications & Spares

Quotation

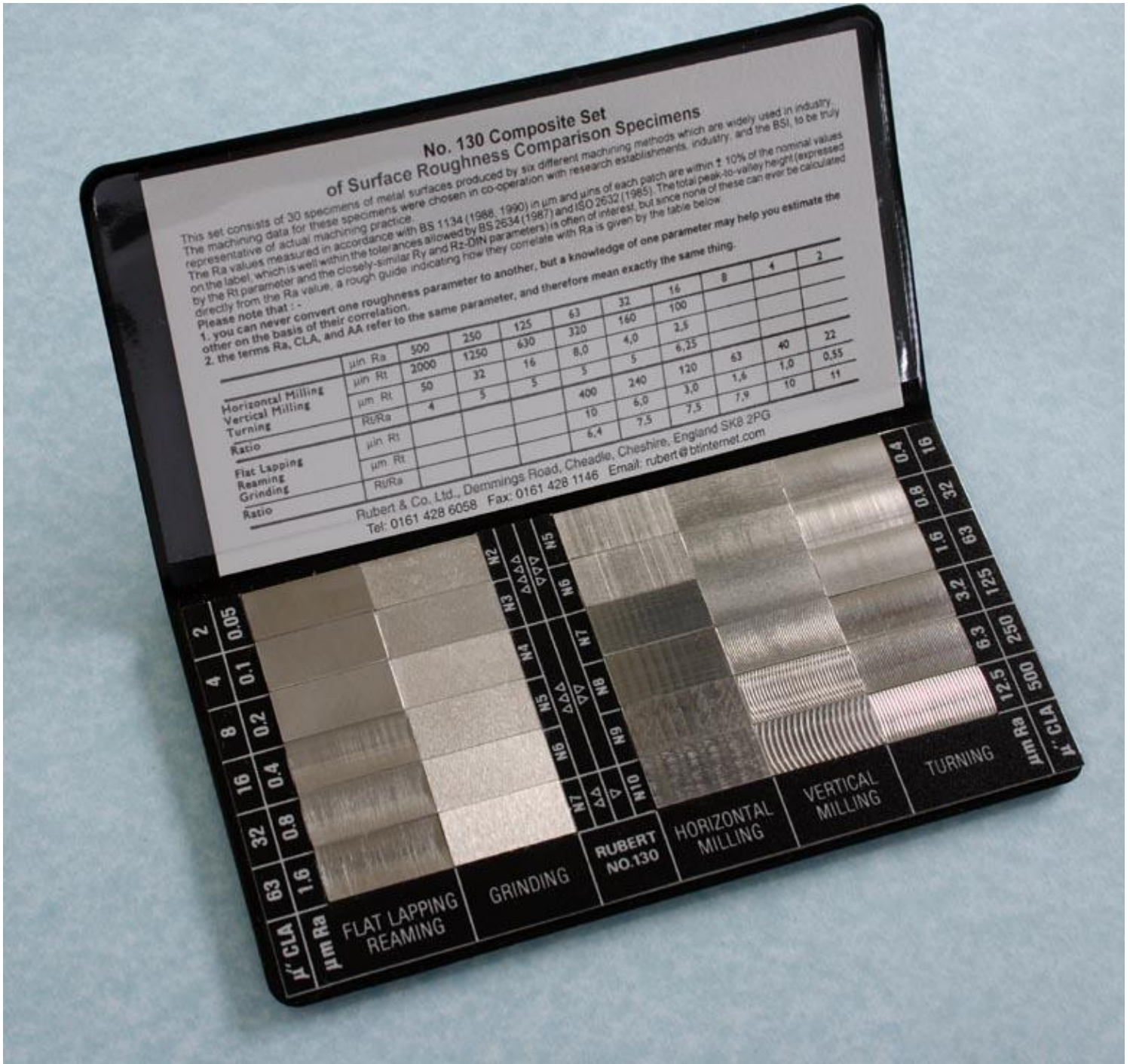
107 | Surface Comparison Chart

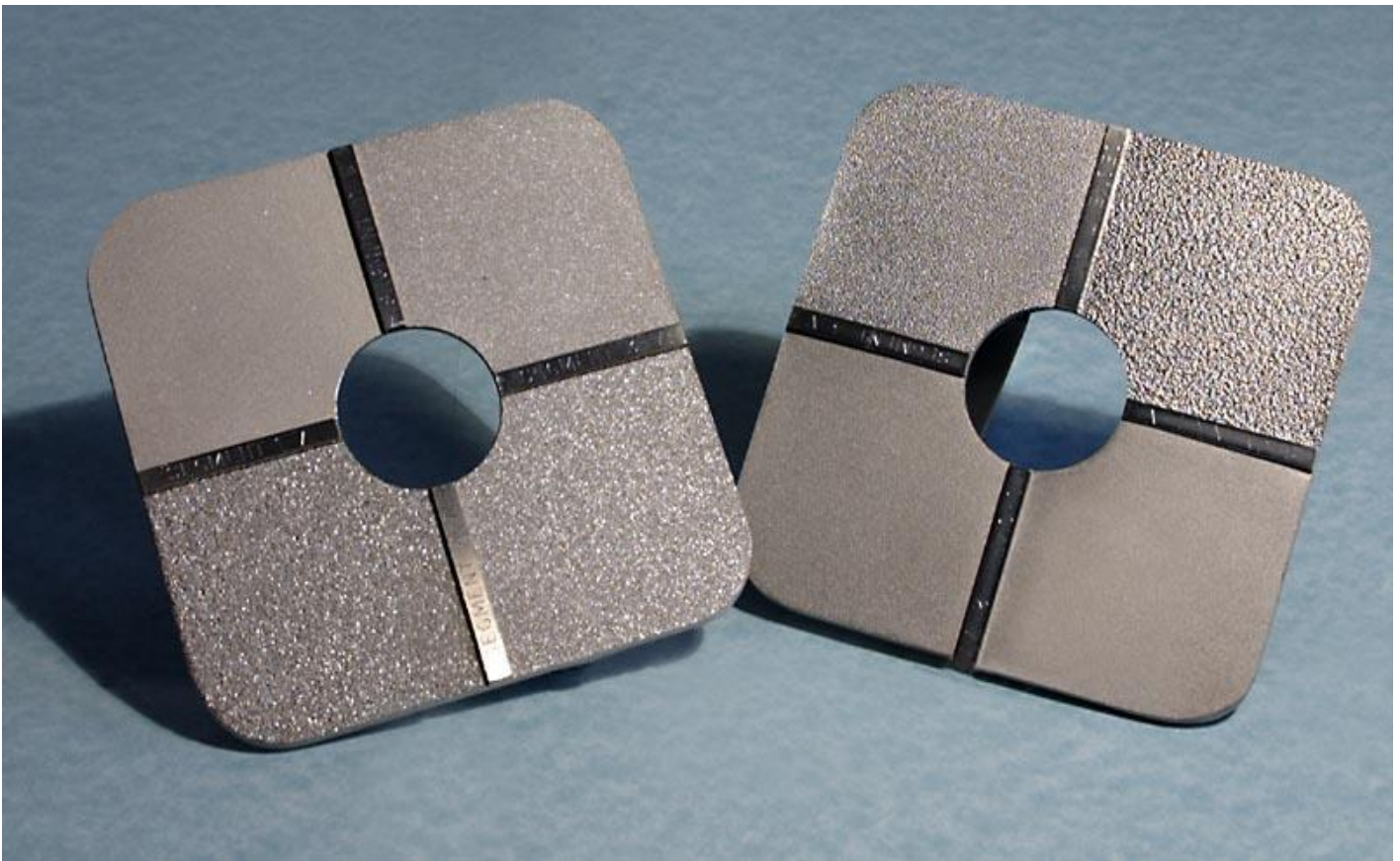
Make	Comparison Chart - Rubert	Sand Blasting - Rubert	M & W	Insize
Model	30 pc set – No. 130	4 pc set – SA 2.5	30 pc set	ISR-CS130-W
Rs.	3750	11500	4800	14204
Catalog	Page No. – 2	Page No. – 2		Page No. – 3

Terms & Conditions –

- ✚ Goods offered - Subject to Prior Sale
- ✚ Price Validity: "15 Days from Date of Quotation"
- ✚ C.S.T 2% extra against form C. Otherwise 5% without form C For Out of Gujarat Sales only.
- ✚ VAT 5% extra for Sales within Gujarat. Prices Ex-Godown Ahmedabad.
- ✚ Payment against Proforma Invoice, Packing, Forwarding & Freight extra.
- ✚ **Bank Detail** – Kotak Mahindra Bank Ltd.
- ✚ **Branch** – Shivranjini
- ✚ **Bank IFSC Code** - KKBK 0000 810
- ✚ **Bank Account No.** 08102 00000 2689
- ✚ Note - While making payment online do mention your Company's name.
- ✚ TIN NO 24070901229 , CST No. 24570901229
- ✚ We are looking forward to your valued orders.

RUBERT MAKE





INSIZE MAKE

SURFACE ROUGHNESS SPECIMEN SET CODE ISR-CS130



- For checking, identifying and specifying the roughness by symbol
- Accuracy: +20% ~ -25%, $Ra \leq 0.1\mu m$
Accuracy: +12% ~ -17%, $Ra > 0.1\mu m$
- Meets ISO 2632
- Rust-proof, made of pure Nickel

Machining method	Roughness (Ra)	Roughness (Rz)	Quantity
Flat lapping	0.05, 0.1, 0.2 μm	0.55, 1, 1.6 μm	3pcs
	2, 4, 8 μm		
Reaming	0.4, 0.8, 1.6 μm	3, 6, 10 μm	3pcs
	16, 32, 63 μm		
Plain grinding	0.05, 0.1, 0.2, 0.4, 0.8, 1.6 μm	0.55, 1, 1.6, 3, 6, 10 μm	6pcs
	2, 4, 8, 16, 32, 63 μm		
Horizontal milling	0.4, 0.8, 1.6, 3.2, 6.3, 12.5 μm	2.5, 4, 8, 16, 32, 50 μm	6pcs
	16, 32, 63, 125, 250, 500 μm		
Vertical milling	0.4, 0.8, 1.6, 3.2, 6.3, 12.5 μm	2.5, 4, 8, 16, 32, 50 μm	6pcs
	16, 32, 63, 125, 250, 500 μm		
Turning	0.4, 0.8, 1.6, 3.2, 6.3, 12.5 μm	2.5, 4, 8, 16, 32, 50 μm	6pcs
	16, 32, 63, 125, 250, 500 μm		

