



# BEARING & TOOL CENTRE



## Head Office

1<sup>st</sup> Floor, Vyapar Bhavan, Kadia Kui,  
Relief Road, Ahmedabad - 380001.  
Ph:- 079 - 22160386, 65254835, 22134835  
Mobile : 7819819941, 9375706649

## Ahmedabad Branch

GF-B-14, Jayraj Complex, Nr. Soni ni Chawl,  
Odhav, Ahmedabad - 382415.  
Ph:- 079 - 22890202, 65458950, 65404657, 65400202  
Mobile : 7878825197, 7819819938, 9375706648

Website : [www.bearingtoolcentre.com](http://www.bearingtoolcentre.com), [www.bearingtoolscentre.com](http://www.bearingtoolscentre.com) | Email : [info@bearingtoolcentre.com](mailto:info@bearingtoolcentre.com)

## Our Sister Concern : RELIEF SERVICE CENTRE

Repairs, Removal of Jaw Error, Bore Gauge Extension, Instrument Modifications & Spares

### Quotation

73	Surface Plate – Granite – Grade 0 – Make - Graph Datum Calibration Cert. Traceable to CMTI , Bangalore – As per IS 7327 - 2003
----	--

Size – mm	300 x 300 x 50	400 x 400 x 63	630 x 400 x 80	630x 630x 80	1000 x 630 x 150
Flatness – micron	--	4.5	5.0	5.0	6.0
Rs. of Plate	1606	2488	4032	5953	13513
Rs. of Stand	--	--	3402	3706	5040
Weight in kg		30	65	100	295
Catalog		Page No. – 9	Page No. – 9	Page No. – 9	Page No. – 9
Size – mm	1000 x 1000 x 150	1200 x 900 x 150	1200 x 1200 x 150	1600 x 1000 x 200	2000 x 1000 x 200
Flatness – micron	7.0	8.0	8.0	8.0	9.5
Rs. of Plate	20740	23630	31500	41220	55650
Rs. of Stand	6130	6590	9770	8440	10170
Catalog	Page No. – 9	Page No. – 9	Page No. – 9	Page No. – 9	Page No. – 9

Note : Forwarding charges + 15% vat on granite surface plate or 2% against C form.

Note : Forwarding charges + 5% vat on Stand or 2% against C form.

73 - 1	Surface Plate – Granite – Grade ' 0 ' - Make Luthra Calibration Cert. Traceable to NPL . New Delhi , AS per IS7327 – 2003
--------	---

Size – mm	300 x 300 x 50	400 x 400 x 603	400 x 630 x 80	630 x 630 x 80	1000 x 630 x 150
Flatness – micron	--	4.5	5.0	5.0	6.0
Rs. of Plate	1450	2250	3840	5400	12870
Rs. of Stand	--		2800	3050	4150
Approx Weight kg	20	30	65	100	295
Catalog		Page No. – 8	Page No. – 8	Page No. – 8	Page No. – 8
Size – mm	1000 x 1000 x 150	1200 x 900 x 150	1200 x 1200 x 150	1600 x 1000 x 200	2000 x 1000 x 200
Flatness – micron	7.0	8.0	8.0	8.0	9.5
Rs. of Plate	19750	22500	30000	39250	53000
Rs. of Stand	5300	5700	8450	7300	8800
Approx Weight kg	470	520	700	1000	1300
Catalog	Page No. – 8	Page No. – 8	Page No. – 8	Page No. – 8	Page No. – 8

Note : Forwarding charges + 15% vat on Surface plate or 2% against C form.

Note : Forwarding charges + 5% vat on Stand or 2% against C for

73 - 2	Surface Plate – <b>Granite</b> – Grade 0 – Make - <b>JAFUJI</b> With Calibration Cert. Traceable – As per IS 7327 – 2003 ( <b>Discount 13%</b> )
--------	--

Size – mm	<b>400 x 400 x 60</b>	<b>630 x 400 x 80</b>	<b>630x 630x 80</b>	<b>800 x 500 x 100</b>	<b>1000 x 630 x 140</b>
Flatness – micron	4.5	5.0	5.0	5.0	6.0
Rs. of Plate	3050	4800	6500	10125	17400
Rs. of MS Stand	4680	5200	5500	6930	7150
Weight in kg	<b>30</b>	<b>65</b>	<b>100</b>	<b>120</b>	<b>300</b>
Catalog	Page No. – 11	Page No. – 11	Page No. – 11	Page No. – 11	Page No. – 11
Size – mm	<b>1000 x 1000 x 150</b>	<b>1200 x 800 x 160</b>	<b>1600 x 1000 x 200</b>	<b>2000 x 1000 x 200</b>	
Flatness – micron	7.0	7.0	8.0	9.5	
Rs. of Plate	31630	33660	63950	80100	
Rs. of MS Stand	8700	10000	12650	13980	
Weight in kg	<b>470</b>	<b>500</b>	<b>1000</b>	<b>1400</b>	
Catalog	Page No. – 11	Page No. – 11	Page No. – 11	Page No. – 11	

73 - 3	Surface Plate – <b>Cast Iron</b> – Grade – Inspection – <b>Make Luthra</b> Calibration Cert. Traceable to NPL . New Delhi , AS per IS 2285 – 2003
--------	---

Size – mm	<b>250 x 250</b>	<b>400 x 400</b>	<b>400 x 630</b>	<b>630 x 630</b>	<b>750 x 600</b>	<b>1000 x 630</b>	<b>1000 x 1000</b>
Rs. of Plate ( <b>Grade 'I'</b> )	2150	4250	7500	10850	14750	19750	40000
Rs. of Plate ( <b>Grade 0</b> )	2500	4900	8650	12500	17000	22750	46000
Rs. of Stand	--	2300	2800	3050	3550	4150	5300
Catalog	Page No.–7	Page No.–7	Page No.–7	Page No.–7	Page No.–7	Page No.– 7	Page No.– 7
Size – mm	<b>1200 x 600</b>	<b>1200 x 900</b>	<b>1200 x 1200</b>	<b>1000 x 1600</b>	<b>1000 x 2000</b>	<b>1200 x 1800</b>	
Rs. of Plate ( <b>Grade I</b> )	35250	44000	65500	85500	107500	129000	
Rs. of Plate ( <b>Grade 0</b> )	40500	50500	75250	98250	123500	148250	
Rs. of Stand	5000	5700	8450	7300	8800	8900	
Catalog	Page no.–7	Page no.–7	Page no.–7	Page no.–7	Page no.–7	Page no.–7	Page no.–7

Note : Forwarding charges + 5% vat on Surface plate or 2% against C form.

Note : Forwarding charges + 5% vat on Stand or 2% against C form.

è **AME BRAND ON LUTHRA PRICE @ 25% DISCOUNT – READY STOCK ( ONLY CAST IRON )**

73 - 4	Surface Plate – <b>Cast Iron</b> – <b>Make Luthra</b> Calibration Cert. Traceable to NPL . New Delhi , AS per IS 2285 - 2003
--------	--

Size – inches	<b>12 x 12</b>	<b>12 x 18</b>	<b>18 x 18</b>	<b>18 x 24</b>	<b>24 x 24</b>
Rs. of Plate ( <b>Grade 'I'</b> )	2400	3700	4700	7650	10250
Rs. of Plate ( <b>Grade '0'</b> )	2750	4250	5400	8800	11750
Rs. of Stand	2300	2300	2300	2800	3050
Catalog	Page no.–7	Page no.–7	Page no.–7	Page no.–7	Page no.–7
Size – inches	<b>24 x 30</b>	<b>24 x 36</b>	<b>36 x 36</b>	<b>36 x 48</b>	
Rs. of Plate ( <b>Grade 'I'</b> )	14750	18350	35000	44000	
Rs. of Plate ( <b>Grade '0'</b> )	17000	21100	40250	50500	
Rs. of Stand	3550	4150	5300	5700	
Catalog	Page no.–7	Page no.–7	Page no.–7	Page no.–7	

Note : Forwarding charges, + 5% vat for Cast Iron surface plate or 2% against C form.

**AME BRAND ON LUTHRA PRICE @ 25% DISCOUNT – READY STOCK ( ONLY CAST IRON )**

Note For Surface Plate :10% Dis. On Plate only, Forwarding charges, + 15% vat for Granite surface plate or 2% against C form.

NOTE For Stand : Stands For Surface Plate Above 1000 X 1000 Will Be Made By 65 X 65mm Angle.

-> **Note :** Central Excise limit with effect from 1-1-2012 on Jafuji make. The rate of Duty applicable is 10.3% ( 10% Basic Excise Duty, 2% Edu. Cess & 1% secondary & higher Edu. Cess).

## **Terms & Conditions –**

- Goods offered - Subject to Prior Sale
- Price Validity: "15 Days from Date of Quotation"
- C.S.T 2% extra against form C. Otherwise 5% without form C For Out of Gujarat Sales only.
- VAT 5% extra for Sales within Gujarat. Prices Ex-Godown Ahmedabad.
- Payment against Proforma Invoice, Packing, Forwarding & Freight extra.
- **Bank Detail** – Kotak Mahindra Bank Ltd.
- **Branch** – Shivranjini
- **Bank IFSC Code** - KKBK 0000 810
- **Bank Account No.** 08102 00000 2689
- Note - While making payment online do mention your Company's name.
- TIN NO 24070901229 , CST No. 24570901229
- We are looking forward to your valued orders.



PRECISION TOOLS



SURFACE  
PLATES



**Material.**

Luthra Surface Plates are made of close grained Cast Iron to IS:210:1962 and their rigidity is secured by deep cross ribbing.

**Hardness:**

Will be between 170-220 BHN.

**Stress Relieving.**

Castings internal stresses are relieved either by natural ageing or by artificial seasoning in our seasoning furnace as recommended in IS:2285:74

**Grades:**

Luthra Surface Plates are offered in two grades Grade-I and Grade-II.

**Workmanship and Finish:**

Grade-I and Grade-II Surface Plates are finished by hand scrapping.

**Accuracy:**

Local errors in flatness over 100 mm distance will not exceeds the following values:

Grade-I	0.005 mm
Grade-II	0.010 mm

In addition to the tolerance on flatness, accuracies & sizes of surface plates are given on the back page.

**Special Provisions:**

Tapped holes are also provided at the top surface, for fixing work or measuring instruments at extra cost. One or more T-Slot on working surface as per customer's requirement at an extra cost.

**Stands:**

Luthra Surface Plates are normally supplied without stand and levelling screws, but cast iron or fabricated stands with levelling screws could be supplied along with the Surface Plates at extra cost on request. The total height of the Marketing Table or Surface Plate is 850 to 920 mm approx. from the floor with stand.

**Wooden Cover:**

Wooden cover to protect the working surface and the sides is supplied free of cost with each Surface Plate.

**Testing:**

Every Surface Plate is tested as recommended in IS:2285:74 and inspection report furnished with each Surface Plate. Our certificate is your assurance of our Surface Plate's dependability and your guarantee that it is the most accurate Surface Plate you can own.

Luthra Surface Plates are most accurate so no point on the working Surface shall very more than the accuracy specified and can be used with confidence, wherever strict accuracy is required so they are suitable for highest class of precision work and you can be assured that a job set anywhere on the Luthra Surface Plate will repeat the same measurement reading as specified. In accuracy and reliability — it is unbeatable. This is the only reason for their nationwide acceptance.

**Packing:** Each surface plate is protected against climatic conditions by suitable protective coating and the complete top is totally rapped in plastic paper.



# PRECISION TOOLS

## SURFACE PLATES

As Per IS:2285-74

Size of Plates in inches	Tolerance in flatness in microns Grade I	Tolerance in flatness in microns Grade II	Size of Plates in mm	Tolerance in flatness in microns Grade I	Tolerance in flatness in microns Grade II
12 x 12	5.0	10.0	250 x 250	5.0	10.0
12 x 18	7.5	15.0	400 x 400	7.5	15.0
18 x 18	7.5	15.0	500 x 500	7.5	15.0
18 x 24	7.5	15.0	400 x 630	7.5	15.0
24 x 24	7.5	15.0	630 x 630	7.5	15.0
24 x 36	10.0	20.0	1000 x 630	10.0	20.0
36 x 36	12.0	24.0	1000 x 1000	12.5	25.0
36 x 48	12.5	25.0	1200 x 900	12.5	25.0
48 x 48	15.0	30.0	1200 x 1200	15.0	30.0
40 x 60	17.5	35.0	1000 x 1600	17.5	35.0
			1000 x 2000	20.0	40.0
			1200 x 1800	20.0	40.0

other sizes on Request

## SIZES & ACCURACIES

## STRAIGHT EDGES

### I Section (Parallel Type)

### Camel Back (Bow Shape)

As per BS:5204-1975

As per IS:5268:69

Size mm	Width mm	Flange Thickness	Accuracy mm	Size mm	Width mm	Flange Thickness	Accuracy mm
300	25	8	0.003	300	30	10	0.003
500	30	10	0.004	500	35	12	0.004
1000	35	12	0.010	1000	45	16	0.008
1500	40	12	0.015	1500	55	20	0.012
2000	50	14	0.020	2000	65	24	0.016
2500	55	15	0.025	2500	80	28	0.020
3000	55	16	0.030	3000	90	32	0.024
4000	60	18	0.040	4000	110	38	0.032
5000	65	20	0.050	5000	115	46	0.040
6000	70	22	0.060	6000	120	54	0.048

### TRIANGULAR/PRISMATIC STRAIGHT EDGES

As per IS:8823:78

## Granite Surface Plates



## Cast Iron Surface Plates



# CAST IRON SURFACE PLATES

As Per IS: 2285-2003



Sizes in Inches	<b>GRADE-I</b> <i>PRICES IN INR</i>	<b>GRADE-0</b> <i>PRICES IN INR</i>	<b>FABRICATED STAND WITH LEVELLING SCREWS</b>	<b>FABRICATED STAND WITH LEVELLING SCREWS AND VIBRATION PADS</b>
12" x 12"	2400.00	2750.00	2300.00	
12" x 18"	3700.00	4250.00	2300.00	
18" x 18"	4700.00	5400.00	2300.00	
18" x 24"	7650.00	8800.00	2800.00	
24" x 24"	10250.00	11750.00	3050.00	4450.00
24" x 30"	14750.00	17000.00	3550.00	4950.00
24" x 36"	18350.00	21100.00	4150.00	5700.00
36" x 36"	35000.00	40250.00	5300.00	7050.00
36" x 48"	44000.00	50500.00	5700.00	7500.00
<i>Other Sizes on Request</i>				
<b>Sizes in MM</b>				
250 x 250	2150.00	2500.00		
400 x 400	4250.00	4900.00	2300.00	
400 x 630	7500.00	8650.00	2800.00	
630 x 630	10850.00	12500.00	3050.00	4450.00
750 x 600	14750.00	17000.00	3550.00	4950.00
1000 x 630	19750.00	22750.00	4150.00	5700.00
1000 x 1000	40000.00	46000.00	5300.00	7050.00
1200 x 600	35250.00	40500.00	5000.00	6550.00
1200 x 900	44000.00	50500.00	5700.00	7500.00
1200 x 1200	65500.00	75250.00	8450.00	10250.00
1000 x 1600	85500.00	98250.00	7300.00	9250.00
1000 x 2000	107500.00	123500.00	8800.00	10750.00
1200 x 1800	129000.00	148250.00	8900.00	11000.00
<i>Other Sizes on Request</i>				



## GRANITE SURFACE PLATES

As Per IS: 7327-2003

Sizes (mm)	<b>GRADE-0</b> PRICES IN INR	<b>FABRICATED STAND</b> WITH LEVELLING SCREWS	<b>FABRICATED STAND</b> WITH LEVELLING SCREWS AND <b>VIBRATION PADS</b>
300 x 300 x 50	1450.00		
400 x 400 x 63	2250.00		
400 x 630 x 80	3650.00	2800.00	4050.00
630 x 630 x 80	5400.00	3050.00	4450.00
1000 x 630 x 150	12250.00	4150.00	5700.00
1000 x 1000 x 150	19750.00	5300.00	7050.00
1200 x 900 x 150	22500.00	5700.00	7500.00
1200 x 1200 x 150	30000.00	8450.00	9250.00
1000 x 1600 x 200	39250.00	7300.00	10250.00
1000 x 2000 x 200	53000.00	8800.00	11000.00

*Other Sizes on Request*



**Tolerances on overall deviation from flatness in microns as per International Standards ISO 8512-1:1990 / IS: 2285-2003**

**Cast Iron Surface Plates**

**Specification**

Sizes L x B mm	Grade 0 um	Grade 1 um	Sizes L x B inches	Grade 0 um	Grade 1 um
250 x 250	3.5	7	12" x 12"	3.5	7
400 x 400	4.5	9	12" x 18"	4.5	9
630 x 400	5	10	18" x 18"	4.5	9
630 x 630	5	10	18" x 24"	5	10
600 x 750	5	10	24" x 24"	5	10
1000 x 630	6	12	24" x 30"	5	10
1000 x 1000	7	14	24" x 36"	6	12
1200 x 600	7	14	36" x 36"	7	14
1200 x 900	7	14	36" x 48"	7	14
1200 x 1200	8	16			
1000 x 1600	8	16			
1000 x 2000	9.5	19			
1200 x 1800	9.5	19			

**Tolerances on overall deviation from flatness in microns as per International Standard ISO 8512-2:1990 / Indian Standard 7327:2003**

Sizes L x B x H mm	Grade 0 um	Grade 1 um
400 x 400 x 63	4.5	9
630 x 400 x 80	5	10
630 x 630 x 80	5	10
1000 x 630 x 150	6	12
1000 x 1000 x 150	7	14
1200 x 900 x 150	7	14
1200 x 1200 x 150	8	16
1600 x 1000 x 200	8	16
2000 x 1000 x 200	9.5	19

INSPECTION REPORT

Clients Name :- BEARING & TOOLS CENTER,  
AHMEDABAD.

Clients Order No :- \*\*\*\*\*

Description of item :- Granite Surface plate, Grade " O "   
Size : 630mm X 630mm.

Document No :- 39 / 2007 – 08.

Date of Inspection :- 20 - 2 - 2008.

Instrument used :- ELECTRONIC LEVEL.

Number of Longitudinal lines .....5

Number of Transversal lines .....5

National Traceability through :- CMTI - Banglore.

Certificate No : 06 / WL / 0586 Valid upto : 22-8-2008.

Result of Inspection.

Sr.No.	Parameters Checked	Specified Values	Observed Values
1.	Flatness of working surface	5.0 $\mu\text{m}$	3 . 98 $\mu\text{m}$
2.	Visual Inspection	O.K.	

It is certified that the product complies with the specification of your order.

Reviewed By :



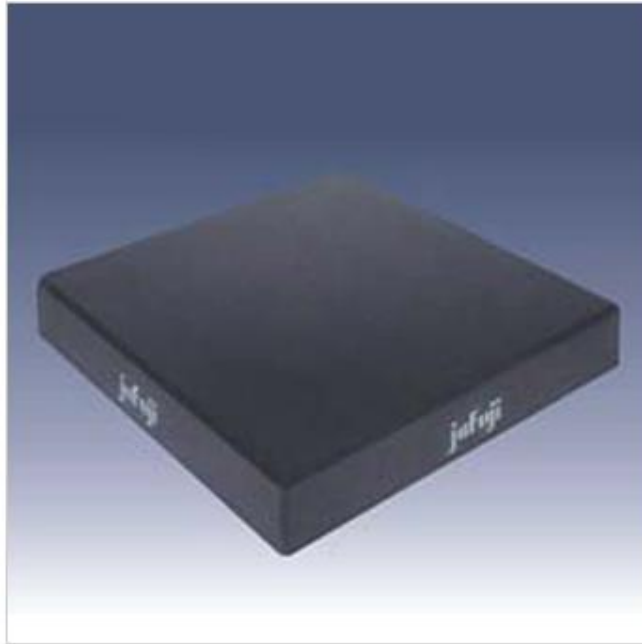
Approved By :



**JAFUJI GRANITE SURFACE PLATE & MS STAND (WITH NABL CALIBRATION CERTIFICATE)**

D.	SURFACE PLATE GRADE "0" SIZES	ACCURACY AS PER IS 7327-2003	APPROX WGHT	APPROX WGHT WITH BOX	APPROX WGHT WITH STD	SURFACE PLATES	WOODEN BOX	MS STANDS WITH LEVELING SCREWS
						PRICE FOR EACH		PRICE FOR EACH
1	400x400x60 mm	4.5 µm	30	40	50	3050	250	4250
2	630x400x80 mm	5.0 µm	65	90	100	4800	600	4725
3	630x630x80 mm	5.0 µm	100	125	150	7500	900	5000
4	800x500x100 mm	5.0 µm	120	150	175	10125	950	6300
5	1000x630x140 mm	6.0 µm	300	350	375	17400	1250	6500
6	1000x1000x150 mm	7.0 µm	470	550	600	31000	1800	7900
7	1200x800x160 mm	7.0 µm	500	600	650	33000	1750	9100
8	1600x1000x200 mm	8.0 µm	1000	1100	1200	62700	3300	11500
9	2000x1000x200 mm	9.5 µm	1300	1400	1550	78500	3800	12700

# JAFUJI MAKE



## Granite Surface Plate

A crystalline rock, has a fine grained, nonporous texture. It is crystalline throughout and the composition is hard and compact. Granite does not have the soft in-between spaces and has therefore a much higher wear resistance plus a higher degree of flatness accuracy.

The material strength of Surface Plate is three times greater than that of ordinary granite and is super rigid. This Surface Plate has a very low expansion coefficient ( $5 \times 10^{-6}$  meter per degree), which makes it least responsive to temperature changes. 100 per cent corrosion-proof and acid resistant. Non-magnetic and easy to clean. No oiling required which is mandatory on cast iron surface plate and with non-glaring satin finish. These plates are inspected through Electronic level Processing System of M/s. Wyler, Switzerland, to ensure the accuracy and flatness.

Plates are supplied with a calibration certificate traceable to National Standards showing graphic display of the flatness. The plates are manufactured by high precision lapping method providing 450 chamfering at edges & corners to avoid chip off and cracks.

## SIZES AVAILABLE

Length	Width	Thickness	Accuracy as per IS-7327-1991 Grade '0'	Approx. Weight in Kgs.
400 mm	400 mm	60 mm	4.5 um	30
630 mm	400 mm	80 mm	5.0 um	65
630 mm	630 mm	80 mm	5.0 um	100
1000 mm	630 mm	150 mm	6.0 um	295
1000 mm	1000 mm	150 mm	7.0 um	470
1600 mm	1000 mm	200 mm	8.0 um	1000
2000 mm	1000 mm	200 mm	9.5 um	1300