



# BEARING & TOOL CENTRE



## Head Office

1<sup>st</sup> Floor, Vyapar Bhavan, Kadia Kui,  
Relief Road, Ahmedabad - 380001.  
Ph:- 079 - 22160386, 65254835, 22134835  
Mobile : 7819819941, 9375706649

## Ahmedabad Branch

GF-B-14, Jayraj Complex, Nr. Soni ni Chawl,  
Odhav, Ahmedabad - 382415.  
Ph:- 079 - 22890202, 65458950, 65404657, 65400202  
Mobile : 7878825197, 7819819938, 9375706648

Website : [www.bearingtoolcentre.com](http://www.bearingtoolcentre.com), [www.bearingtoolscentre.com](http://www.bearingtoolscentre.com) | Email : [info@bearingtoolcentre.com](mailto:info@bearingtoolcentre.com)

## Our Sister Concern : RELIEF SERVICE CENTRE

Repairs, Removal of Jaw Error, Bore Gauge Extension, Instrument Modifications & Spares

### Quotation

#### 57 | Combination Set

Range-mm	W	C	D %	300	2 pc.	600
Insize Rs.	12	N		6210		
Code				2278-180		
Catalog				Page No - 2		
Kristeel Rs.		N	30	2675	615	--
Code				1516C	1516A	
Catalog				Page No - 2,3,4	Page No - 2,3,4	
Aerospace Rs.		N	10	2000		--
M & W Rs.	6	N		2500		4600
Code				CS 300		CS 600
Catalog				Page No - 5		Page No - 5

#### 57 - 1 | Combination Set – Scale only

Range-mm	W	C	D %	300	600
Aerospace Rs.	-	N	10	1020	2640
Yamayo- Cla Rs.	-	N		1000	2800
M & W Rs.		N		700	2000
Catalog				Page No - 5	Page No - 5

**Note:- Aerospace item once sold will not be taken back even if it is Faulty.**

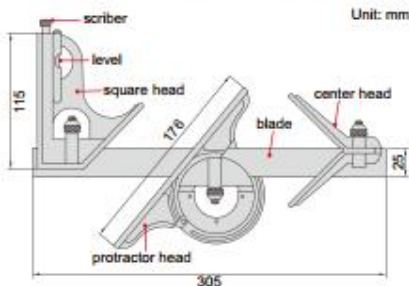
\*\*\* W – Warranty , C – Certificate , D- Discount

### Terms & Conditions –

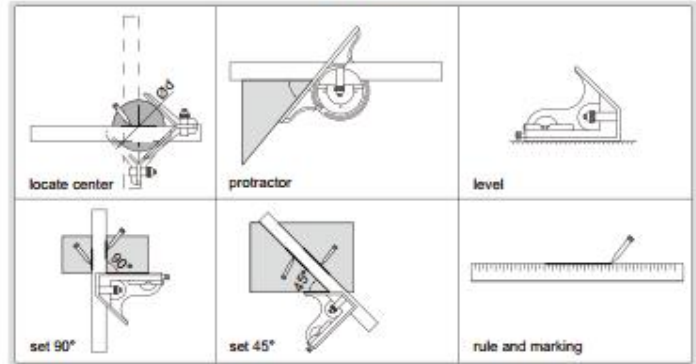
- Goods offered - Subject to Prior Sale
- Price Validity: "15 Days from Date of Quotation"
- C.S.T 2% extra against form C. Otherwise 5% without form C For Out of Gujarat Sales only.
- VAT 5% extra for Sales within Gujarat. Prices Ex-Godown Ahmedabad.
- Payment against Proforma Invoice, Packing, Forwarding & Freight extra.
- **Bank Detail** – Kotak Mahindra Bank Ltd.
- **Branch** – Shivranjini
- **Bank IFSC Code** - KKBK 0000 810
- **Bank Account No.** 08102 00000 2689
- Note - While making payment online do mention your Company's name.
- TIN NO 24070901229 , CST No. 24570901229
- We are looking forward to your valued orders.

# INSIZE MAKE

- Center head:  
To locate center of cylinder with diameter ( $\varnothing$ d): 30 - 100mm  
Accuracy:  $\pm 0.15$ mm
- Protractor head:  
To set the blade at desired angle to an edge of a workpiece, and can be used to measure angles  
Range: 0-180°  
Accuracy:  $\pm 7$ min.
- Square head:  
To set the blade at 90° or 45° to an edge of a workpiece  
Accuracy:  $\pm 8$ min for 90° square,  $\pm 10$ min for 45° square
- Blade:  
Range: 300mm/12",  
Graduation: 0.5mm and 1/32" on front face, 1mm and 1/64" on back face
- Optional accessory: rigid rule (code 7113)



**Code**  
2278-180



# KRISTEEL MAKE

## COMBINATION TRY & METER SQUARE - 2PC.



## **COMBINATION TRY & METER SQUARE - 2PC.**

- A - POLISH FINISH
- B - HARD CHROME FINISHED

This tool combines try and meter square, depth gauge, height gauge marking gauge and rules which can be used separately, if desired. A spirit level is incorporated in the die-cast stock. The blade is machined parallel and english on both edges. Metric in mm and english in 1/16ths. The die-cast stock is finished with a high quality enamel. Available in 300 mm/12 inch length only.

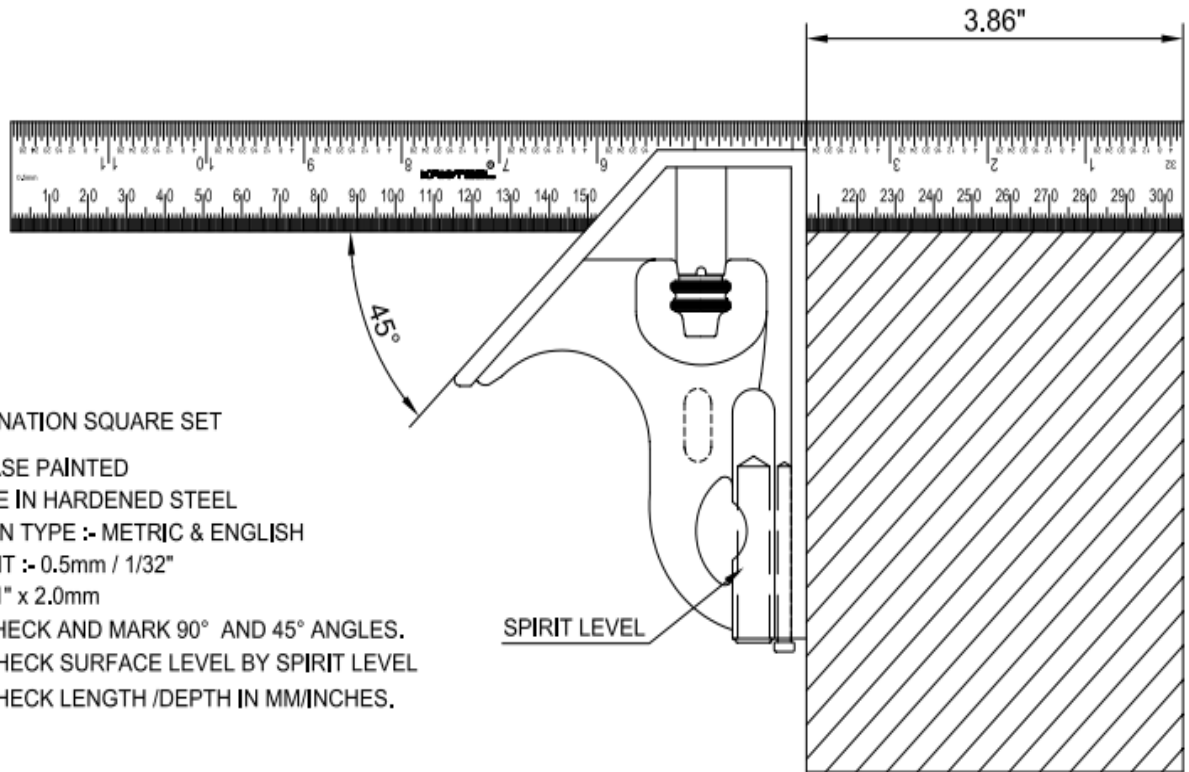


**COMBINATION TRY METER SQUARE - 4-PC**

Includes Ruler 90° Head, centre Square, Prohead, Scriber, & level. A very precisely ground product with good aesthetic appeal. This world class product comes to you in handsome attractive packing.

**2 Pc. COMBINATION SET**

**KRISTEEL® - Shinwa**



**2 Pc. COMBINATION SQUARE SET**

CASTING BASE PAINTED

BLADE MADE IN HARDENED STEEL

GRADUATION TYPE :- METRIC & ENGLISH

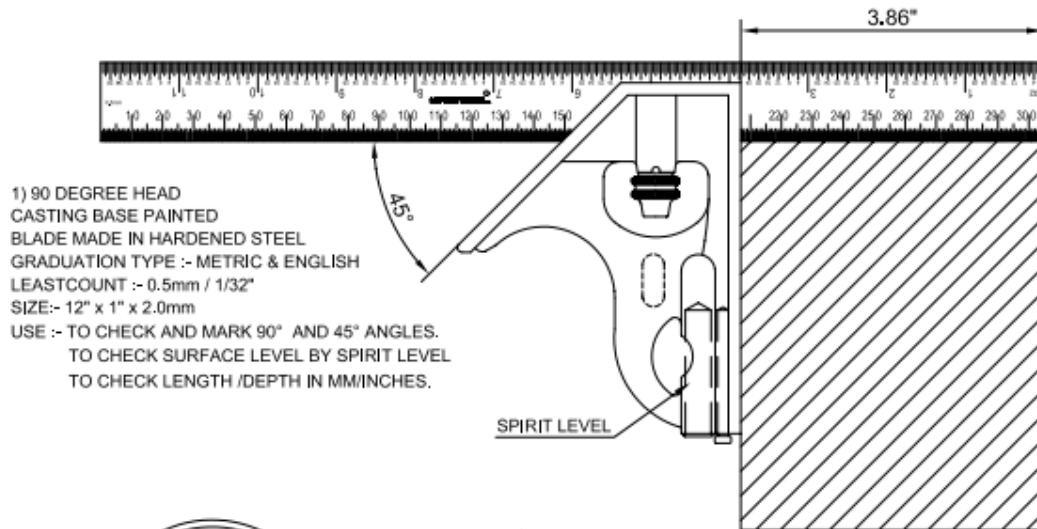
LEASTCOUNT :- 0.5mm / 1/32"

SIZE:- 12" x 1" x 2.0mm

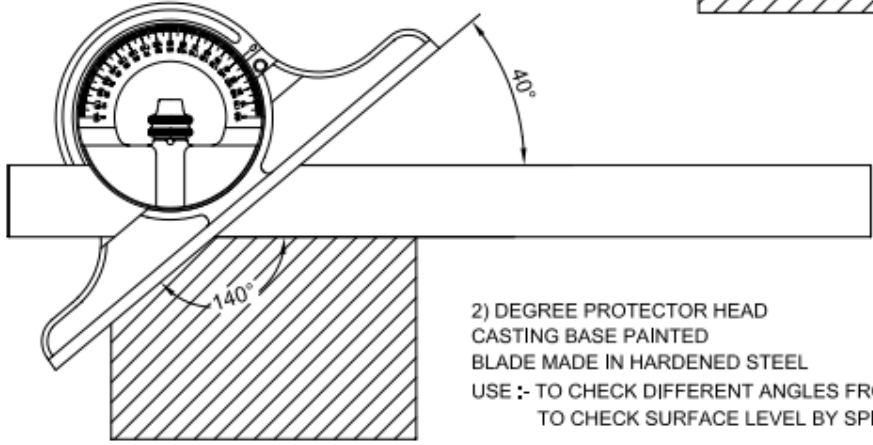
USE :- TO CHECK AND MARK 90° AND 45° ANGLES.

TO CHECK SURFACE LEVEL BY SPIRIT LEVEL

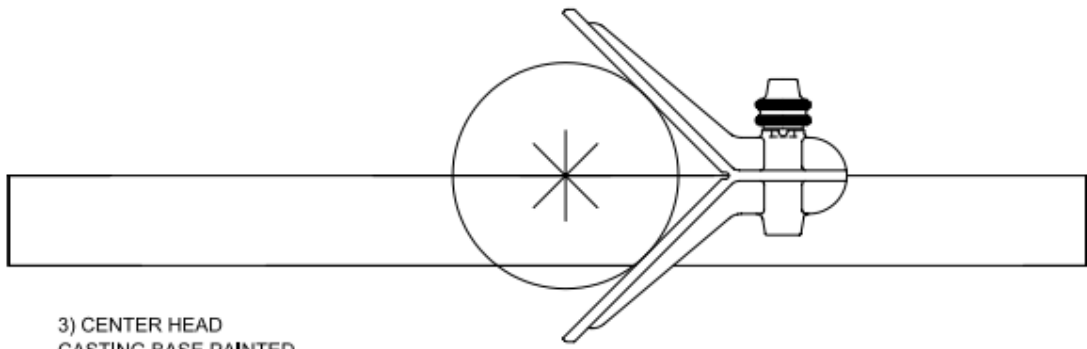
TO CHECK LENGTH /DEPTH IN MM/INCHES.



1) 90 DEGREE HEAD  
 CASTING BASE PAINTED  
 BLADE MADE IN HARDENED STEEL  
 GRADUATION TYPE :- METRIC & ENGLISH  
 LEASTCOUNT :- 0.5mm / 1/32"  
 SIZE:- 12" x 1" x 2.0mm  
 USE :- TO CHECK AND MARK 90° AND 45° ANGLES.  
 TO CHECK SURFACE LEVEL BY SPIRIT LEVEL  
 TO CHECK LENGTH /DEPTH IN MM/INCHES.



2) 2 DEGREE PROTECTOR HEAD  
 CASTING BASE PAINTED  
 BLADE MADE IN HARDENED STEEL  
 USE :- TO CHECK DIFFERENT ANGLES FROM 0° TO 180°  
 TO CHECK SURFACE LEVEL BY SPIRIT LEVEL



3) CENTER HEAD  
 CASTING BASE PAINTED  
 BLADE MADE IN HARDENED STEEL  
 USE :- FINDING AND MARKING CENTER POINT OF ROUND DISCS AND SHAFTS  
 RANGE:- UPTO 100 MM DIAMETER

FULL SET OF 4 Pc.COMBINATION SET PACKED IN PLASTIC BOX / PAPER BOX

# M&W MAKE



CODE	RANGE	PRICE
CS 300	180 <sup>0</sup>	2,500/-
CS 600	180 <sup>0</sup>	4,600/-

## Scale Only

SIZE	PRICE
300 mm	700/-
600 mm	2,000/-