



# BEARING & TOOL CENTRE



## Head Office

1<sup>st</sup> Floor, Vyapar Bhavan, Kadia Kui,  
Relief Road, Ahmedabad - 380001.  
Ph:- 079 - 22160386, 65254835, 22134835  
Mobile : 7819819941, 9375706649

## Ahmedabad Branch

GF-B-14, Jayraj Complex, Nr. Soni ni Chawl,  
Odhav, Ahmedabad - 382415.  
Ph:- 079 - 22890202, 65458950, 65404657, 65400202  
Mobile : 7878825197, 7819819938, 9375706648

Website : [www.bearingtoolcentre.com](http://www.bearingtoolcentre.com), [www.bearingtoolscentre.com](http://www.bearingtoolscentre.com) | Email : [info@bearingtoolcentre.com](mailto:info@bearingtoolcentre.com)

## Our Sister Concern : RELIEF SERVICE CENTRE

Repairs, Removal of Jaw Error, Bore Gauge Extension, Instrument Modifications & Spares

### Quotation

#### 187 Club Hammers - Groz

Item No	D %	Catalog	Price Rs.	Head Weight gm	Kg	Lbs	Handle Length Inch	Handel length mm
CHID / 2.5 / 12	22 %	Page - 3	1667	1100	1.1	2.5	12	300
CHID / 4 / 12		Page - 3	1970	1800	1.8	4	12	300
CHID / 4 / 16		Page - 3	2274	1800	1.8	4	16	300

#### 187 - 1 Sledge Hammers - Groz

Item No	D %	Catalog	Page No	Price Rs.	Head Weight gm	Kg	Lbs	Handle Length Inch	Handel length mm
SHID / 6 / 24	22 %	Page - 3	4	3503	2700	2.7	6	24	600
SHID / 6 / 30		Page - 3	4	3981	2700	2.7	6	30	750
SHID / 8 / 24		Page - 3	4	3364	3600	3.6	8	24	600
SHID / 8 / 30		Page - 3	4	4299	3600	3.6	8	30	750
SHID / 10 / 30		Page - 3	4	4550	4500	4.5	10	30	750
SHID / 12 / 30		Page - 3	4	5004	5500	5.5	12	30	750
SHID / 14 / 30		Page - 3	4	5415	6300	6.3	14	30	750

#### 187 - 2 Ball Pein Hammers - Groz

Item No	D %	Catalog	Price Rs.	Head Weight gm	Kg	Lbs	Handle Length Inch	Handel length mm
BPID / 24 / 14	22%	Page - 5	1212	685	0.685	1.5	14	350
BPID / 32 / 14		Page - 5	1363	915	0.915	2	14	350

#### 187 - 3 Cross Ball Pein Hammers - Groz

Item No	D %	Catalog	Price Rs.	Head Weight gm	Kg	Lbs	Handle Length Inch	Handel length mm
CPID / 2 / 16	22 %	Page - 6	1970	1100	1.1	2.4	16	400
CPID / 3 / 16		Page - 6	2123	1600	1.6	3.5	16	400

<b>187 - 4</b>	<b>Copper Head SledgeHammers - Groz</b>
----------------	---

Item No	D %	Catalog	Price Rs.	Head Weight gm	Kg	Lbs	Handle Length Inch	Handel length mm
CHID / 4 / 12 / CU	22 %	Page – 7	6053	1800	1.8	4	12	300
SHID / 8 / 24 / CU		Page – 7	12728	3600	3.6	8	24	600
SHID / 14 / 30 / CU		Page – 7	21691	6400	6.4	14	30	750

<b>187 - 5</b>	<b>Claw Hammers - Groz</b>
----------------	----------------------------

Item No	D %	Catalog	Price Rs.	Head Weight gm	Kg	Lbs	Handle Length Inch	Handel length mm
CLID / 16 / 13	22 %	Page – 8	1059	450	0.45	16 oz	13	330

<b>187 - 6</b>	<b>Brass Sledge Hammers - Groz</b>
----------------	------------------------------------

Item No	D %	Catalog	Price Rs.	Head Weight gm	Kg	Lbs	Handle Length Inch	Handel length mm
SHID / 2.5 / 12 / BR	22 %	Page – 9	3080	1100	1.1	2.5	12	300
SHID / 2.5 / 16 / BR		Page – 9	3360	1100	1.1	2.5	16	400
SHID / 4 / 12 / BR		Page – 9	4230	1800	1.8	4	12	300
SHID / 4 / 16 / BR		Page – 9	4650	1800	1.8	4	16	400

## **Terms & Conditions –**

- Goods offered - Subject to Prior Sale
- Price Validity: "15 Days from Date of Quotation"
- C.S.T 2% extra against form C. Otherwise 5% without form C For Out of Gujarat Sales only.
- VAT 5% extra for Sales within Gujarat. Prices Ex-Godown Ahmedabad.
- Payment against Proforma Invoice, Packing, Forwarding & Freight extra.
- **Bank Detail** – Kotak Mahindra Bank Ltd.
- **Branch** – Shivranjini
- **Bank IFSC Code** - KKBK 0000 810
- **Bank Account No.** 08102 00000 2689
- Note - While making payment online do mention your Company's name.
- TIN NO 24070901229 , CST No. 24570901229

We are looking forward to your valued orders

## **Club Hammers Specification :**

Indestructible handle made up of 4 spring steel bars

Bars locked with hammer head using steel locking plate ensures that the head remains fixed always

Forged hammer head is induction hardened 52-56 HRC

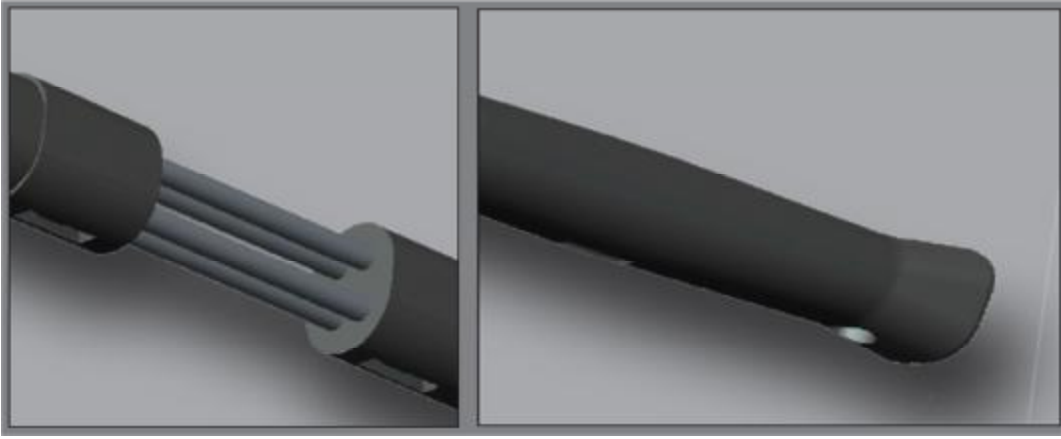
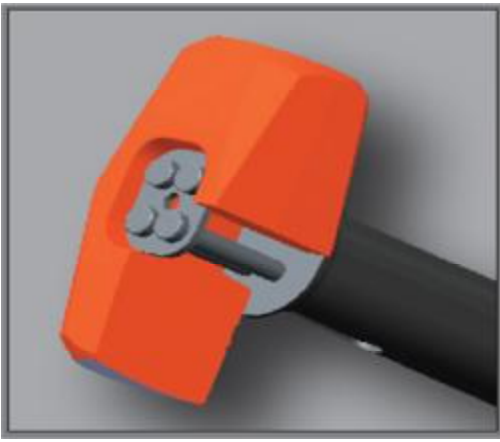
Ergonomic rubber grip handle absorbs vibration

#### **APPLICATION**

Minor demolition work

Driving -in stakes & fence posts

Drilling in concrete



#### **Sledge hammers Specification :**

Indestructible handle made up of 6 spring steel bars

Bars locked with hammer head using steel locking plate ensures that the head remains fixed always

Forged hammer head is induction hardened 52-56 HRC

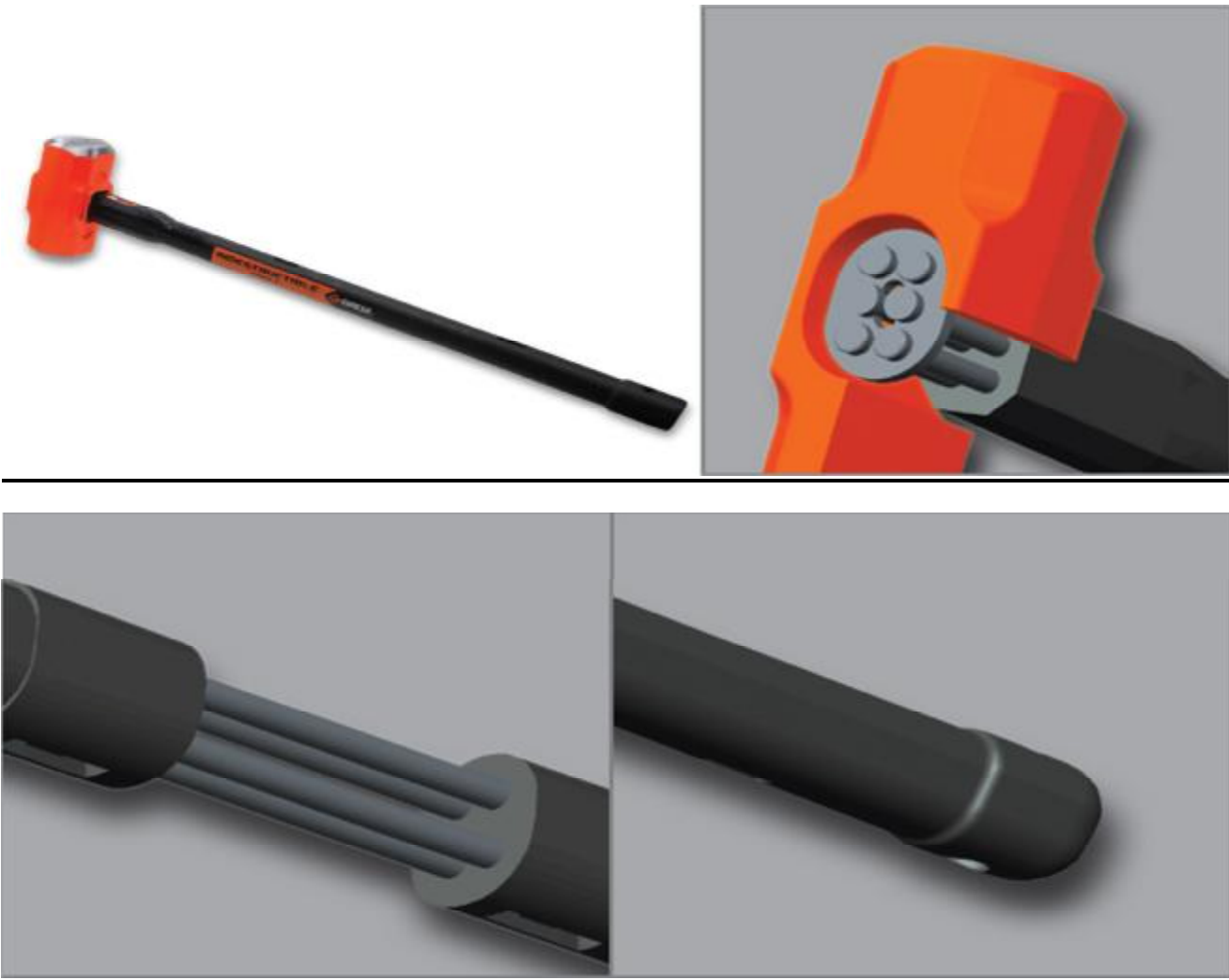
Ergonomic rubber grip handle absorbs vibration

### **APPLICATION**

Construction - fracturing stone & concrete

Heavy demolition work

Mining



### **Ball PeinHammers Specification :**

Indestructible handle made up of 2 spring steel bars

Bars locked with hammer head using steel locking plate ensures that the head remains fixed always

Forged hammer head is induction hardened 52-56 HRC

Ergonomic rubber grip handle absorbs vibration

#### **APPLICATION**

Bending & Shaping Metal

Driving Punches & Chisels

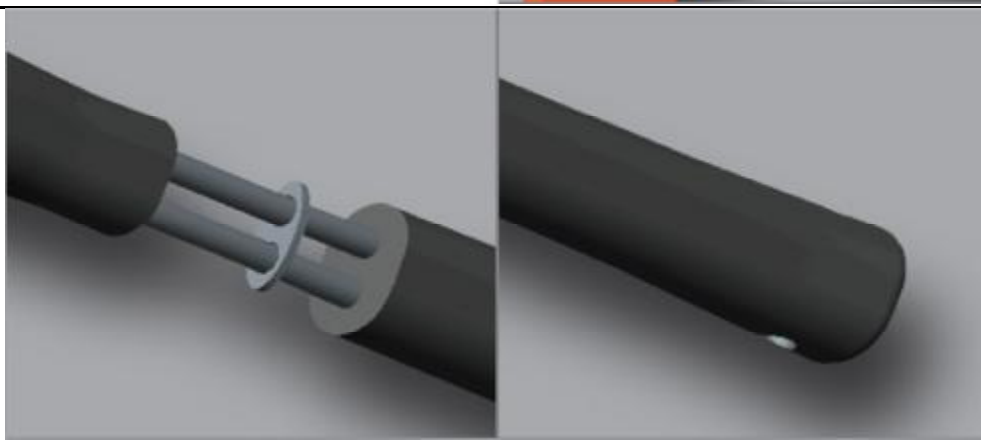
Concrete & Stone Work

Hand Forging

Setting Rivets

Peen Riveted & Welded Material

Texturing Face of Metal



#### **Cross Pein Hammers Specification :**

Indestructible handle made up of 4 spring steel bars

Bars locked with hammer head using steel locking plate ensures that the head remains fixed always

Forged hammer head is induction hardened 52-56 HRC

Ergonomic rubber grip handle absorbs vibration

**APPLICATION**

Heavy Forging

Bending & Shaping Metal

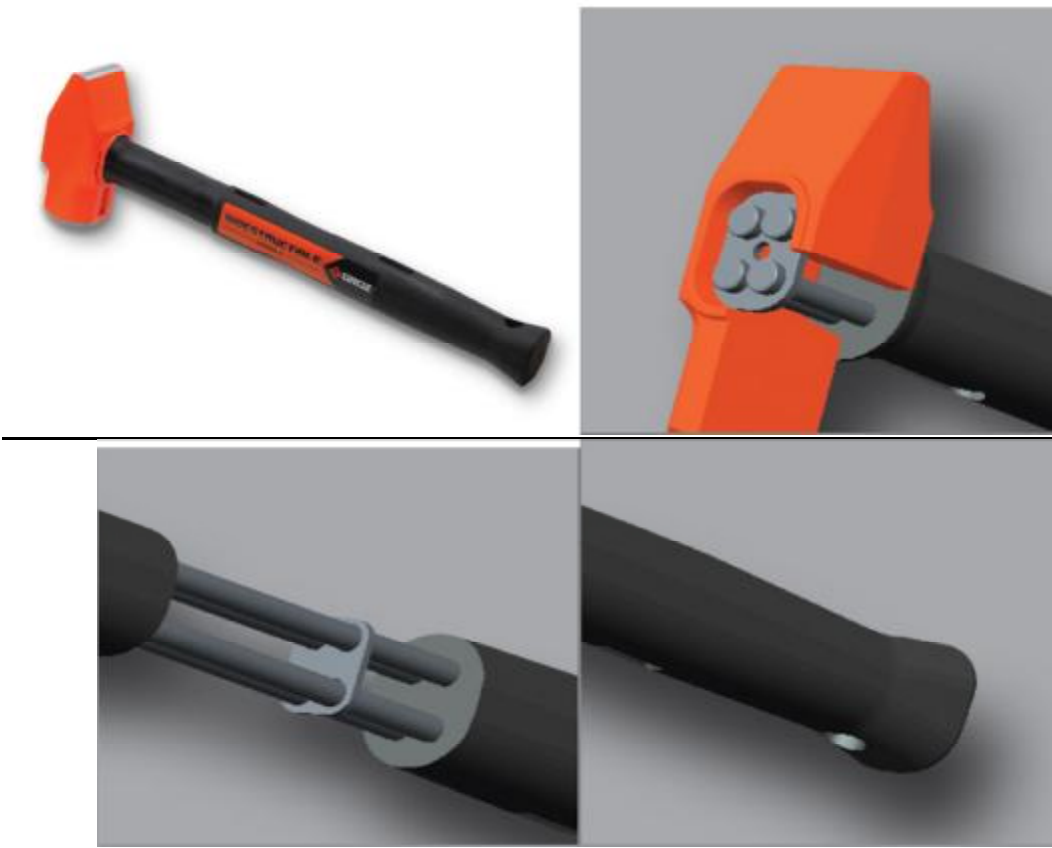
Spreading Metal

Driving Punches & Chisels

Driving Masonry Drills

Concrete & Stone Work

Starting Panel Pins & Tacks



**Copper Head Sledge Hammers Specification :**

Indestructible handle made up of spring steel bars

Bars locked with hammer head using steel locking plate ensures that the head remains fixed always

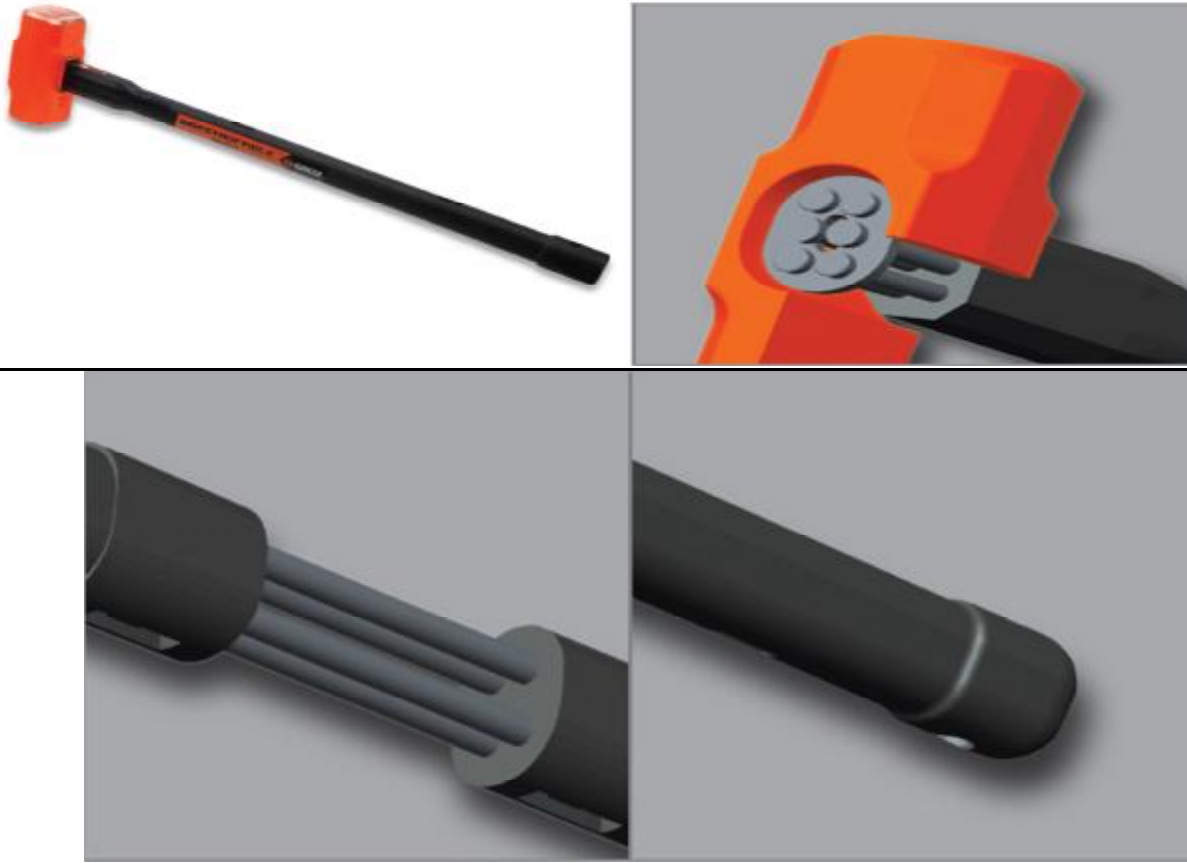
Forged hammer head is forged from 99.9% pure copper for spark free use

Ergonomic rubber grip handle reduces vibration

### **APPLICATION**

Underground Coal Mining

Metal Forming



### **Claw Hammers Specification :**

Indestructible 13" (330 mm) long handle is made with 2 spring steel bars that run all the way through the handle.

Bars are locked with the hammer head using steel locking plates ensuring that the head never gets dislodged

Hammer Head is forged from special steel & induction case hardened 52-56 HRC for extended life

Well shaped, curved claw is tapered for maximum grip & higher leverage when gripping a nail

Special bonding process ensures that the head never gets loose from the handle

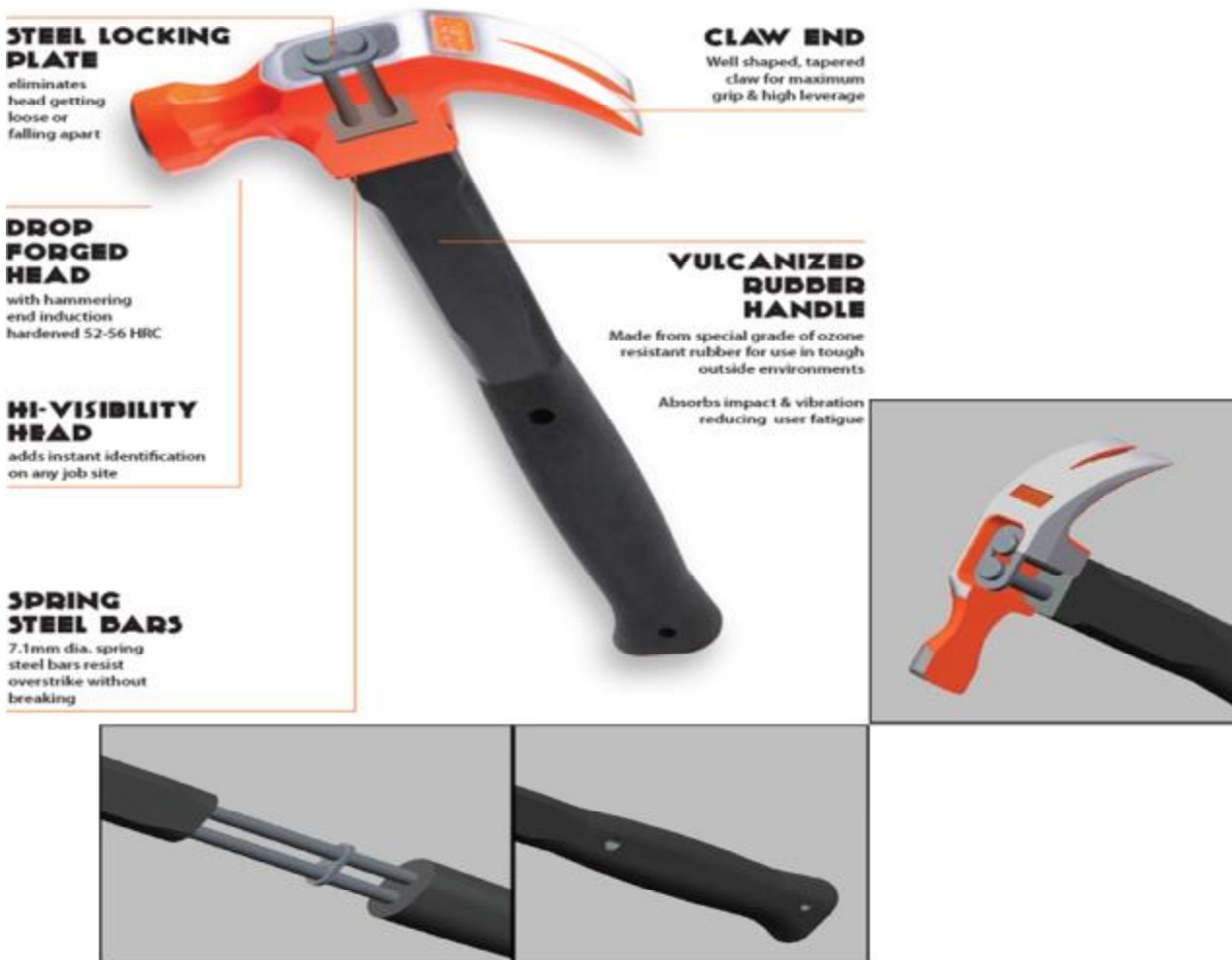
Ergonomic rubber grip handle absorbs shock & vibration reducing fatigue

#### UTILITY

Pulling Out Nails

Lifting Floorboards

Carpentry Work



#### Brass Sledge Hammers Specification :



Indestructible handle made with 4 spring steel bars

Bars are locked with the hammer head using steel locking plates ensuring that the head remains fixed always

Ergonomic rubber grip handle absorbs vibration

UTILITY

Oil Rigs

Gas Industry

Automotive applications where the struck surface is soft

**STEEL LOCKING PLATE**

eliminates head getting loose or falling apart

**DROP FORGED HEAD**

Forging renders higher strength to the head not seen in cast heads

**SPRING STEEL BARS**

7.1mm (9/32") dia. spring steel bars resist overstrike without breaking

**MAR RESISTANT**

Mar resistant Soft Brass Head absorbs impact & helps reduce work damage. Great for automotive applications!  
Spark resistant head makes these hammers suitable for use in combustible environments such as in the Oil & Gas Industry

**VULCANIZED RUBBER HANDLE**

Made from special grade fo ozone resistant rubber for use in tough outside environments  
Absorbs impact & vibration reducing user fatigue  
Protects user in the event of striking an electrical wire

