



BEARING & TOOL CENTRE



Head Office

1st Floor, Vyapar Bhavan, Kadia Kui,
Relief Road, Ahmedabad - 380001.
Ph:- 079 - 22160386, 65254835, 22134835
Mobile : 7819819941, 9375706649

Ahmedabad Branch

GF-B-14, Jayraj Complex, Nr. Soni ni Chawl,
Odhav, Ahmedabad - 382415.
Ph:- 079 - 22890202, 65458950, 65404657, 65400202
Mobile : 7878825197, 7819819938, 9375706648

Website : www.bearingtoolcentre.com, www.bearingtoolscentre.com | Email : info@bearingtoolcentre.com

Our Sister Concern : RELIEF SERVICE CENTRE

Repairs, Removal of Jaw Error, Bore Gauge Extension, Instrument Modifications & Spares

Quotation

77 Plain Plug Gauges H7 and Other Std – With certificate – Swastik / Advance / Baker make

Size - mm	3 – 9	10 – 19	20 – 29	30 – 39	40 – 49	50 – 59	60 – 69	70 – 79	80 – 89
Advance Rs.	410	480	610	820	970	1160	1750	2200	2400
Swastik Rs.	275	310	450	550	625	755	830	965	1205

Size – mm	90 - 99	100 - 119	120-139	140-159	160 – 179	180 – 199	200 - 225	225 - 250	250 – 275
Advance Rs.	2900	2700	2650	2750	2800	2900	3000	3050	3150
Swastik Rs.	1345	1450	1520	1620	1725	1895	2005	2310	2650

Size – mm	275-300	300-325	325-350	350-375	375-400
Advance Rs.	3600	4050	4450	3800	5200

77 - 1 Reversible Pin Type Plug Gauge – Swastik

Size mm	0.5 – 1	1.01 – 3	3.01 – 10	3 - 6	6 - 12
Swastik Rs.	300	345	375	-	-
Advance Rs.	500	475	-	550	660

77 – 2 Plain Rings Gauges – With certificate – Swastik / Advance / Baker make

Rings – mm / inch	5 – 9	10 – 19	20 – 29	30 – 39	40 – 49	50 – 59	60 – 69	70– 79	80- 89	90– 99	100- 109	110– 119
Swastik Rs.	750	600	675	720	790	900	975	1050	1430	1800	2220	2470
Advance Rs.	770	600	660	720	880	1075	-	-	-	-	-	-

Rings–mm/In	120–129	130–139	140–149	150–159	160–169	170-179	180-189	190-199	200-212	213-224
Swastik Rs.	2850	3370	4270	4650	5550	5960	7390	9830	-	-

Rings–mm/In	200 - 225	225 - 235	235 - 250
Swastik Rs.	12780	15300	17815

Plain Ring Set size 5 to 50mm – step of 5mm – 10 pc set - Rs. 5600.00

77 – 3 Master Setting Discs - Swastik

Size mm	3 – 10	10 – 20	20 – 40	40 – 60	60 – 80	80 – 100	100 – 120	120 – 135	135 – 150
Swastik Rs.	390	485	590	755	1010	1415	1895	2625	3035

77 – 4 Plain Key Way Gauges – Go + Nogo - With certificate – Swastik

Size mm	1-2	2 – 5	5 – 20	20 – 40	40 - 50	50-80	80-100
Swastik Rs.	415	315	415	485	515	745	790

77 – 5 Plain Plug Gauge – Combination - Single Ended / Double Ended - with certificate – Swastik

Size mm	5 – 25	5 – 55	5 – 55	5 – 55	10 – 50mm
Step mm	2.5	1	5	5	5
No. of pcs.	9	51	11	11	9
Ended	Double	Single	Double	Single	Single
Rs.	3650	14865	5750	3100	4125

77– 6	Thread Ring gauge – only Go - 20 x 2.5 & 21 x 1.5 mm	Wear block 1 / 2 mm – pair
	Rs.1650 + 1650 thm or quality master make	Rs.1400

Delivery = Swastik – 6 to 9 days , Advance – 20 to 30 days , Baker – 30 to 45 days

Terms & Conditions –

- Goods offered - Subject to Prior Sale
- Price Validity: "15 Days from Date of Quotation"
- C.S.T 2% extra against form C. Otherwise 5% without form C For Out of Gujarat Sales only.
- VAT 5% extra for Sales within Gujarat. Prices Ex-Godown Ahmedabad.
- Payment against Proforma Invoice, Packing, Forwarding & Freight extra.
- **Bank Detail** – Kotak Mahindra Bank Ltd.
- **Branch** – Shivranjini
- **Bank IFSC Code** - KKBK 0000 810
- **Bank Account No.** 08102 00000 2689
- Note - While making payment online do mention your Company's name.
- TIN NO 24070901229 , CST No. 24570901229
- We are looking forward to your valued orders.

BAKER MAKE

MASTER SETTING RINGS



NOMINAL DIAMETER RANGE						UNIT RATE ₹
MM			INCH			
Above		Upto & Including	Above		Upto & Including	
1.5	-	2.5	0.06	-	0.10	2610.00
2.5	-	5.0	0.10	-	0.20	1700.00
5.0	-	20.0	0.20	-	0.79	1150.00
20.0	-	40.0	0.79	-	1.57	1180.00
40.0	-	60.0	1.57	-	2.36	1340.00
60.0	-	80.0	2.36	-	3.15	2090.00
80.0	-	100.0	3.15	-	3.94	2840.00
100.0	-	120.0	3.94	-	4.72	3390.00
120.0	-	140.0	4.72	-	5.51	4170.00
140.0	-	150.0	5.51	-	5.90	4970.00
150.0	-	160.0	5.90	-	6.30	6030.00
160.0	-	170.0	6.30	-	6.70	7080.00
170.0	-	180.0	6.70	-	7.09	7570.00
180.0	-	190.0	7.09	-	7.48	8490.00
190.0	-	200.0	7.48	-	7.87	9030.00
200.0	-	212.0	7.87	-	8.35	11310.00
212.0	-	224.0	8.35	-	8.82	12810.00
224.0	-	236.0	8.82	-	9.29	16500.00
236.0	-	250.0	9.29	-	9.84	18120.00
250.0	-	265.0	9.84	-	10.43	22660.00
265.0	-	280.0	10.43	-	11.02	25710.00
280.0	-	300.0	11.02	-	11.81	29040.00
300.0	-	315.0	11.81	-	12.40	32920.00

- "Certificate of Calibration" is provided with each gauge, traceable to National/International Length Standards.
- For NABL (National Accreditation Board for Testing & Calibration Laboratories) Certification, extra charges will be applicable, which can be made available on request. For NABL Scope of Accreditation, please refer page 28 & 29.

Technical Notes :

1. Master Setting Rings will be manufactured as per DIN - 2250C.
2. Technical supply conditions as per DIN 2239, with surface finish as per Class - I.
3. Made from Oil Hardening Non-Shrinking Gauge Steel Hardened & Tempered to 700 HV.
4. Sub-zero treated at -80° C for dimensional stability.
5. Calibrated at 20° C under Standards Room conditions.
6. Actual dimensions duly etched.



MASTER SETTING DISCS

NOMINAL DIAMETER RANGE						UNIT RATE ₹
MM			INCH			
Above		Upto & Including	Above		Upto & Including	
3.0	-	10.0	0.12	-	0.39	890.00
10.0	-	24.0	0.39	-	0.95	680.00
24.0	-	40.0	0.95	-	1.58	800.00
40.0	-	65.0	1.58	-	2.56	920.00
65.0	-	80.0	2.56	-	3.15	1,070.00
80.0	-	100.0	3.15	-	3.94	1,240.00
100.0	-	120.0	3.94	-	4.72	1,540.00
120.0	-	140.0	4.72	-	5.51	2,170.00
140.0	-	150.0	5.51	-	5.90	2,830.00
150.0	-	160.0	5.90	-	6.30	3,270.00
160.0	-	175.0	6.30	-	6.89	3,610.00
175.0	-	190.0	6.89	-	7.48	4,140.00
190.0	-	200.0	7.48	-	7.87	4,775.00

- "Certificate of Calibration" is provided with each gauge, traceable to National/International Length Standards.
- For NABL (National Accreditation Board for Testing & Calibration Laboratories) Certification, extra charges will be applicable, which can be made available on request. For NABL Scope of Accreditation, please refer page 28 & 29.

Technical Notes :

1. The Gauge blanks will be as per ANSI-B47.1 - 1988.
2. Tolerances followed as per Class - X of ASME B89.1.5 - 1998.
3. Made from Oil Hardening Non-Shrinking Gauge Steel Hardened & Tempered to 700 HV.
4. Sub-zero treated at -80° C for dimensional stability.
5. Calibrated at 20° C under Standards Room conditions.
6. Actual dimensions duly etched.

TERMS & CONDITIONS (for products)

1. PRICE : Ex-Works, Pune.
2. PACKING & FORWARDING : EXTRA @ 3%
3. SALES TAX / VAT : Extra as applicable, Sales Tax declaration form, if any, may be sent along with the order.
4. CENTRAL EXCISE : Extra as applicable at the time of despatch.
5. PAYMENT : 25% Advance alongwith order and balance against Proforma Invoice.
6. DESPATCH : Courier Service.
7. FREIGHT : Extra at Actual.
8. INSURANCE : To be arranged by you.
9. OCTROI : Extra to your account.
10. This pricelist is subject to alteration without any notice & cancels all our previous pricelists.





Material:

Plain Plug Gauges are manufactured from special grade, hot iso-statically pressed tungsten carbide which is ground and precision lapped to ensure the best surface finish, quality and life in use.

Cost-Advantage:

We offer a choice of choosing between GO and NO-GO both made in Tungsten Carbide and GO in Tungsten Carbide with NO-GO made in steel. The latter type is more popular owing to the cost advantage.

Standards:

Our Plug Gauges are manufactured to relevant I.S., B.S. and DIN standards based on customer requests. We also specialize in non-standard designs such as extra lengths, multiple diameters, air grooves, pilots, depth steps and relieved NO-GO ends. Our steel gauges can be provided with hard chrome plating for prolongs gauge life.

Diameter	Range
0.5 to 20 mm	- Reversible type design
8 to 40 mm	- Taper shank design
40 to 60 mm	- Trilock design
40 to 400 mm	- Plate type plug gauge

Any special designs for example extra lengths, multiple diameters, air grooves, pilots, depth steps and relieved ends can be provided as per customer design.

**Material:**

Ring gauges are manufactured in both steel and tungsten Carbide.

Sizes:

Tungsten carbide ring gauges are manufactured from Inner Diameter 3.5 mm. to 60 mm. Steel ring gauges and master setting rings are manufactured from Inner Dia. 1 mm. to 200 mm.

Description:

Tungsten Carbide ring gauges have an outer steel casing, which protects the inner carbide ring.

Use:

Tungsten Carbide as well as steel ring gauges are used to check the outside diameter of work pieces. The work piece is inserted into the Inner dia. Of the steel ring. If it passes through the GO ring gauge then it means that the work piece is good for its lower size limit. If the work piece does not pass through the NOGO ring gauge it means that the work piece is OK for the higher size limit. A ring gauge is also effective to check out of roundness on the higher side. A master setting ring is used as a standard to set bore gauges, which can then be used to determine deviation from the master size.



Material:

Snap Gauges also called as gap gauges are manufactured in steel as well as tungsten carbide.

Standards: Snap gauges (gap gauges) are made as per relevant IS Standard blank design and tolerances.

Type:

Single ended progressive type, double ended; adjustable frame type, split type and gauges are also designed to customer specification on request.

Single ended progressive type snap gauges are the most popular snap gauge types owing to its fast gauging method. The front portion of the gauge is the GO member, which passes through the work-piece that has to be checked. As the gauge slides into the work-piece it reaches the NOGO member area where it (ideally) stops sliding. Thus in one pass the inspector knows that the work piece under inspection is within specified size or not.

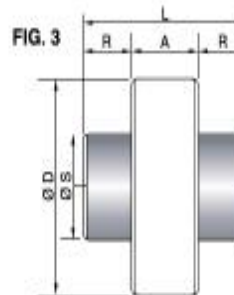
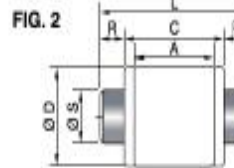
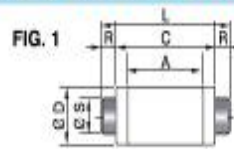
Double ended snap gauges have dedicated GO and NOGO sides. The gauge has to be inserted in each side to know if it has reached the limit. Although it is a comparatively slow method of gauging it is more reliable and allows more gauging area thereby lower wear and higher gauge life.

Adjustable type Snap Gauges offer the flexibility of building up your own gauge within any size in the specified range. It is preferred where the number of components to be inspected is less but the variety of sizes to be inspected is more.

Sizes: 0.5 mm. to 4 mm. in Split type design. 4 mm. to 160 mm. in Single ended progressive type or double ended type.

MASTER SETTING DISCS

FIG.- RANGE : 3 to 10 mm
 FIG.- RANGE : 10 to 40 mm
 FIG.- RANGE : 40 to 200 mm
 AS PER ASME/ANSI B47.1 (STYLE 3)



BLANK DIMENSIONS

Nominal Shaft ϕ 'D'		A	C	R	ϕ S	L
ABOVE	UPTO & INCLUDING					
3	4	10	17	11	2	40
4	6	11	19	11	3	41
6	10	13	21	11	6	43
10	13	14	22	13	9	48
13	20	16	24	13	13	49
20	30	17	25	16	19	57
30	40	21	29	16	25	60

Nominal Shaft ϕ 'D'		A	R	ϕ S	L
ABOVE	UPTO & INCLUDING				
40	50	22	19	32	60
50	65	22	19	32	60
65	75	25	43	38	111
75	90	25	43	38	111
90	100	25	43	38	111
100	115	25	43	38	111
115	130	25	43	38	111
130	140	25	43	38	111
140	150	25	43	38	111
150	165	25	43	38	111
165	180	25	43	38	111
180	190	25	43	38	111
190	200	25	43	38	111

MASTER SETTING RINGS

BLANK DIMENSIONS

NOMINAL BORE DIAMETER 'd'		D mm	L ₁ mm
ABOVE	UPTO AND INCLUDING		
1.5	2.5	22	4
2.5	5	22	5
5	10	32	8
10	15	38	10
15	20	45	12
20	25	53	14
25	32	63	16
32	40	71	18
40	50	85	20
50	60	100	20
60	70	112	24
70	80	125	24
80	90	140	24
90	100	160	24
100	110	170	28
110	120	180	28
120	130	190	28
130	140	200	28
140	150	212	28
150	160	224	28
160	170	236	32
170	180	250	32
180	190	265	32
190	200	280	32
200	212	300	32
212	224	315	32
224	236	335	36
236	250	355	36
250	265	375	36
265	280	400	36
280	300	425	36
300	315	450	36

AS PER IS : 3485-1983/DIN 2250-C.

FIG. 1 :- RANGE : 1.5 to 100 mm

FIG. 2 :- RANGE : 100 to 315 mm

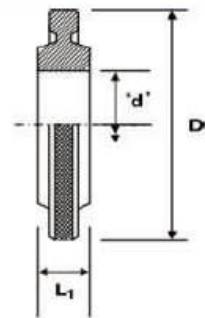
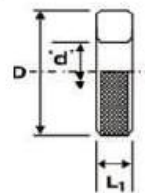


FIG. 1

FIG. 2



Material:

Snap Gauges also called as gap gauges are manufactured in steel as well as tungsten carbide.

Standards: Snap gauges (gap gauges) are made as per relevant IS Standard blank design and tolerances.

Type:

Single ended progressive type, double ended; adjustable frame type, split type and gauges are also designed to customer specification on request.

Single ended progressive type snap gauges are the most popular snap gauge types owing to its fast gauging method. The front portion of the gauge is the GO member, which passes through the work-piece that has to be checked. As the gauge slides into the work-piece it reaches the NOGO member area where it (ideally) stops sliding. Thus in one pass the inspector knows that the work piece under inspection is within specified size or not.

Double ended snap gauges have dedicated GO and NOGO sides. The gauge has to be inserted in each side to know if it has reached the limit. Although it is a comparatively slow method of gauging it is more reliable and allows more gauging area thereby lower wear and higher gauge life.

Adjustable type Snap Gauges offer the flexibility of building up your own gauge within any size in the specified range. It is preferred where the number of components to be inspected is less but the variety of sizes to be inspected is more. **Sizes:** 0.5 mm. to 4 mm. in Split type design. 4 mm. to 160 mm. in Single ended progressive type or double ended type.